

# 87

random / cluster

A matrix of hot glass is stretched and folded back onto itself numerous times as it cools. Air is trapped between the folds and stretched along the grain of the loop, creating microfilaments that give the piece a pearlescent optical quality. A light source is introduced at one end of the loop casting light through the microfilaments and registering a gentle gradient.



# 87

random / cluster



## Lamping

1.5w LED or 10w xenon

## Material

pulled glass, braided metal coaxial cable, electrical components, and brushed nickel or white powder coated canopy

## Patent

Worldwide patents pending  
EU Patent # 03611144 - 0005-0009



±115-240 (4.5'-9.5')

# 87

random / cluster

Adjustable Lengths  
Random canopies

87.1



87.1



87.1m



87.1mi



87.1mo



87.3



87.5



87.7

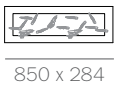


adjustable  
up to  
3000 (10')  
standard

adjustable  
up to  
30500  
(100')  
custom

Fixed Lengths  
Random canopies

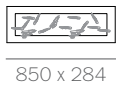
87.11



87.11



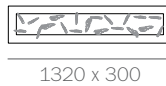
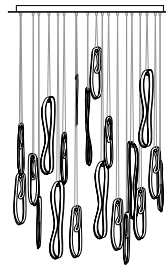
87.14



87.14



87.20



87.26

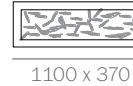


87.26

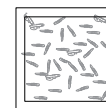


600

87.36



87.36



fixed  
length  
up to  
3000 (10')  
standard

fixed  
length  
up to  
30500  
(100')  
custom

755

# 87

random / cluster

## Adjustable Lengths

Non-swig Cluster canopies

87.3



Ø152

87.7



Ø203

adjustable  
up to  
3000 (10')  
standard

adjustable  
up to  
30500  
(100')  
custom

## Fixed Lengths

Non-swig Cluster canopies

87.19



Ø501

87.37



Ø600

87.61



Ø707

fixed  
length  
up to  
3000 (10')  
standard

fixed  
length  
up to  
30500  
(100')  
custom

87  
random / cluster



Designed by Omer Arbel, 2017  
[www.bocci.ca](http://www.bocci.ca)



**BOCCI**

© 2018, Bocci Design and Manufacturing Inc.  
Any inquiries should be directed to: [info@bocci.ca](mailto:info@bocci.ca)

87  
random / cluster

